



---

## BULLETIN 2 (INSTRUCTIONS)

---

**Date:** 27 – 29 August 2021 (Friday – Sunday)

**Organizer:** Spolek Orientačních Sportů Jindřichův Hradec, z.s. (SJH)

**Event Centre:** Staré Město pod Landštejnem, Cyklocamp pod Landštejnem

Location: 49.0137N, 15.2520E (<https://en.mapy.cz/s/kagesukomu>)

**By entering the event centre, each participant claims that she/he/it meets all the conditions requested by the Ministry of Health of the Czech Republic (<https://www.mzcr.cz/category/uredni-deska/rozhodnuti-ministerstva-zdravotnictvi/aktualni-mimoradna-a-ochranna-opatreni-ke-covid-19/>) to be eligible to participate to the sports event.**

**Read carefully also traffic information on page 13. Almost all access roads to Staré Město pod Landštejnem are subject to some difficulties (road works).**

**Information:** <http://interkompas.sosjh.cz>,

ORIS (<https://oris.orientacnisporty.cz/Zavod?id=6206>)

e-mail: [interkompas@email.cz](mailto:interkompas@email.cz)

### Registration

Friday 27 August from 10:00 till the last start + at least 100 minutes, Saturday 28 August from 9:30 till the last start + at least 120 minutes.

Registration will be located close to the entrance to the gym building of Cyklocamp. **Each club should be represented by a single person at the registration.** She/he/it obtains (a) accounting document for paid entries, (b) wrist bands for those accommodated in O-camp.

Additional entries are **only** possible in classes HDR, P, T (**up to the number of maps printed**) and latest a day before, on Friday till 13:00. In all other classes, the only possible changes are a change of a name within one class, change of the SI card number.

Till Friday 10:00, all changes can be sent via e-mail ([interkompas@email.cz](mailto:interkompas@email.cz)), everything is valid upon confirmation. Starting from Friday 10:00, we do not read any e-mails and everything must be resolved personally at the registration.

### Accommodation in the centre

**Arrival on Thursday:** Please, go to the reception (= restaurant on the left-hand side) for additional instructions. Tents can be constructed starting from 15:00.

**Arrival on Friday:** Accommodation in buildings of Cyklocamp: go to the reception (= restaurant on the left-hand side) where you obtain keys and wrist bands. Tents in O-camp: follow instructions of the organizers (arrival at 10:00 at the earliest).

**O-camp:** Meadow (the „U“-shape around the forest next to Cyklocamp), see a map on page 7. Cars cannot be parked next to tents! Cars of participants accommodated in the O-camp will be preferably parked either on the edge of the O-camp meadow or on the asphalt area next to the restaurant. Caravans will park in the area South-West from the reception/restaurant.

## Event centre

See page 7 for a map.

**Food/drinks:** Available in the Cyklocamp restaurant (also breakfast items in the morning).

**Toilets:** All permanent toilets in Cyklocamp can be used. Additional mobile toilets will be available.

**Drinking water:** Available in the washrooms (buildings next to huts).

**Showers:** in the washrooms. Showers work on a timer and 20 CZK coins. If the machine does not accept the coin, there is not enough hot water available at the moment, it is necessary to wait a bit, the water heats up continuously.

**Lake:** The large lake North-West of the centre is a reservoir of drinking water. It is not allowed to enter not only the water but also a certain area along the bank of the reservoir.

## Parking

**Parking fee:** 80 CZK/car, 160 CZK/caravan (EUR also accepted, 4 EUR/car, 8 EUR/caravan, no change on EUR payments). will be collected in cash upon the first entrance.

**One-way traffic:** On Friday between 12:00 a 15:30 there will be a one-way traffic on the track between Staré Město pod Landštejnem and Cyklocamp. Only **arrival** to the centre will be allowed in this time period.

**Organization of parking on Friday:** The parking fee will be collected on the track between Staré Město pod Landštejnem and Cyklocamp. The driver will clarify whether (a) he/she/it only commutes, (b) he/she/it stays in the O-camp, (c) he/she/it stays in the building of Cyklocamp. Depending on this information, the parking receipt of certain color will be given which should be placed visibly behind the windscreen. Group (a) then slowly continues through the Cyklocamp and will park on places behind it (at most 800 m apart). Groups (b) and (c) will park in Cyklocamp. In all cases, please, follow instructions of organizers.

## No parking

It is strictly prohibited to park the cars along the road Staré Město – Stálkov – Matějovec including all adjacent forest areas and forest paths. Thank you for respecting this.

## Maps, control descriptions, common information for all stages

**Maps:** Scale 1:10 000, eq. 5 m. In E1 a E3, classes P, HDR, DH10(N), DH55B, DH65AB, DH75 will run on the 1:7 500 scale map. Map specification ISOM 2017-2, prepared by Jan Beneš and Arnošt Komárek in a period October 2020 – August 2021. Maps will be printed on a waterproof material pretex.

**Clearings and fences:** The last revisions of the maps took place in a week from 9th August. Still, new clearings (or larger clearings as compared to the map) and fences might be present in the forest but not in the map. Thanks for your understanding.

**Control descriptions:** Available in a pictogram form in the **centre**. There are **no** control descriptions printed on a map. They will also **not be available** at start. Control descriptions for the three stages will be distinguished by different colors. The control descriptions are also available in ORIS as PDF for self-printing.

**Special map symbols:** **brown triangle:** platform, **green cross:** root stock, **black cross:** triangulation pole or a small campsite in the forest, **black circle:** smaller pre-WWII (built in 1938) fortress.

Vegetation boundary is mapped by using the green dashed line.

## Stages

Detailed information related to each stage are available in the second part of this Bulletin on pages 8 – 9.

## Warnings, forest works

Logging may take place in some places in the forest. If you approach such place, keep distance of at least 50 m from the forest workers.

There are many heaps of stored logs in the forest. Do not climb them, there is a danger of serious injury. Some of logs are even treated by chemicals which are not really good for your health. Inform your children in particular!

Be aware of cyclists as well as of trucks (transporting the wood from the forest) on all bigger paths.

## Training

Latest from Wednesday 25 August, a training course will be available on the map [Moravův lom 1.1](#), close to village *Bílá u Sedla*. Parameters: 5,7 km / 140 m / 19 kontrol. The state of a map is from June 2020. More serious discrepancy between the map and terrain should be expected on a path between controls 5 and 6 (less trees in terrain than in the map). There are red-white plastic ribbons on controls. Map start, finish and control #19 (the last control) are not marked in the forest. Control descriptions are on the map.

Park on an area next to the road II/128, opposite to the turn heading to *Bílá*, see points 1 and 2 at <https://mapy.cz/s/1erubacece>.

The training map can be downloaded from [ORIS](#) (PDF). Printed maps can be obtained at the registration for a fee of 10 CZK/map.

## Concomitant culture

Life music to listen as well as to dance: on **Friday** from approx. 17:30 till 22:00(+?) in the event centre.

## Orienteering equipment shops

Orienteering equipment shops will be available in the event centre.

## First aid

Minor injuries will be treated by a physician present in the finish area of each stage. For more serious injuries/cases, the *Jindřichův Hradec Hospital* with an emergency (also surgical) is available, entrance from the roundabout on the fork of Vídeňská and Jáchymova streets, [49.1398203N, 15.0059164E](#) (<https://en.mapy.cz/s/3wYHc>). Parking possible on the hospital premises.

## Kindergarten

It will be open for the duration of the race in the event centre always 45 min before the start time 00.

Children can only be left in the kindergarten for a necessary amount of time when their parents are in the forest. Parents are obliged to pick up their children as soon as possible after they finish. Please, equip children with drink, snack and possibly a favorite toy.

## Punching system

Electronic, SportIdent. The SI units **will be** set in the **contactless** Beacon mode. Each SI card might be used at most once within each stage. The competitor is obliged to clear the SI card in the first corridor before the start and to check it in the second corridor. In the third (last), start, corridor there will be a possibility to test the contactless capability of SIAC cards (SIAC TEST).

In case of failure of SI unit, use the pin punch to mark the “R” fields placed on the edge of the map. Maps with this stamping must be handed over in the finish area for inspection.

**SI reading** will always be located in the event centre. The competitor is obliged to have his/her SI card read in the finish area even if (s)he does not complete the race.

Time is recorded in complete seconds.

## Start

Interval start in E1 a E2, chasing start in E3. The way to the start from the event centre is marked by blue-white ribbons. It is necessary to arrive at start E1 and E2 3 minutes in advance, at start E3, competitor must report him/herself 6 minutes in advance.

Competitors of classes HDR, P and T start from a separate corridor at any time **while following instructions of the organizers**, but no later than at **the start of the last competitor of other categories**. The start SI unit must be punched. The map is taken only by the competitor. The companions (friends, siblings, parents, aunts, uncles, etc.) **may not** take another map.

## Finish

The competitor finishes the race by punching either of the two finish SI units placed at the finish line (E1 and E2, contactless in case of using the SIAC card). In E3, the ranking of competitors on the finish line will be determined by the finish referee. The competitor punches (contact mode for everybody) the finish SI unit placed after the finish line according to instructions of the finish referee.

The maps will not be taken away in the finish area. We rely on your Fair Play.

## Forbidden areas

It is not allowed to access forest fences (map symbol 516: fence is used for them) and private land (olive green in the map, map symbol 520). It is also prohibited to enter the protection area of the Landštejn water reservoir which may happen during E1 (map symbol 709: purple hatches).

Outside the competitor's time in the race, it is forbidden to access forest areas of **not yet completed stages** with the O-map. Nevertheless, it is allowed to move through the forest at any time while using commonly available maps (tourist maps, google etc.).

## Start numbers

Only in E3 for the best five competitors of the total results after E2 (not applicable for classes HDR, P, T). The start numbers (including the safety pins) will be available at start.

## Results

Will be gradually displayed at the stage centre. On-line results will be available on the following links:

E1 <https://liveresultat.orientering.se/followfull.php?lang=cz&comp=19960>

E2 <https://liveresultat.orientering.se/followfull.php?lang=cz&comp=19961>

E3 <https://liveresultat.orientering.se/followfull.php?lang=cz&comp=19962>

The official results will be published in **ORIS**.

## Start lists for E3

Will be displayed in the event centre and in **ORIS** (<https://oris.orientacnisporty.cz/Zavod?id=6205>) on Saturday evening.

## Prize giving ceremony

On **Sunday** after the finish of the leading competitors of all classes, presumably at 12:30, the prize giving ceremony will take place. The best three runners of overall results in classes D10N, D10, D12, D14, D16, D18, D21A, D35A, D45A, D55A, D65A, D75, H10N, H10, H12, H14, H16, H18, H21A, H35A, H45A, H55A, H65A, H75 will be announced and awarded. In classes D21B, D21C, D35B, D45B, D55B, D65B, H21B, H21C, H35B, H45B, H55B, H65B only the overall winner will be announced and awarded.

## Protests

Any protests in a written form only to the chief referee (A. Komárek) with the deposit of CZK 400. Possible protests against the official results can be sent within 14 days upon their publication by e-mail [interkompas@email.cz](mailto:interkompas@email.cz) while using the message subject „Protest“.

## Jury

A three-member jury will be named and announced in the event centre. Proposal: Milan Venhoda (SJI7104, R1), Lenka Míková (VCB7653, R3), Petr Gregor (RUZ7500, R3).

## Officers

Event director:	Michal Pobuda (SJH7403)
Entries:	Jiří Michal (SJH7802)
Chief referee (event):	Arnošt Komárek (SJH7702, R2)
Chief referees (stages):	E1: Milan Havlík (SJH6201, R3) E2: Arnošt Komárek (SJH7702, R2) E3: Jiří Parkan (SJH6801, R3)
Course setters:	E1: Arnošt Komárek (SJH7702, R2) E2: Jan Beneš (SJH7001, R2) E3: Petr Nouza (SJH6501, R2)

## Notice

Competitors start at their own risk and within their health insurance. The organizer provides only the first aid in the finish area of each stage. Minors are the responsibility of their legal representatives. The organizer is not liable for damages caused by a third party.

No entry with a dog to the forest.

Ownership of the map (including older versions) does not justify entries to private land or organisation of unannounced training. All training activities requiring a stay in the racing area with an O-map must be negotiated in advance with the organizer.

## Privacy and photography (GDPR)

By sending an application for this event, each participant agrees to publish his personal data in the scope of the mandatory format of the Czech Orienteering Federation (ČSOS) in the form of application form, start list and results on event website, in the ORIS information system, in the instructions for the participants and at stage centers. During the course of the event, photographs will be taken to inform the public about the race, the statement of the subsidies for the event, etc., in accordance with §89 of Act No. 89/2012 Coll., The Civil Code of the Czech Republic. In addition, photographs can be taken for the personal use of competitors (such as event memories, promotion of the O-clubs), in particular from prize winning ceremony and from finish. In case you do not agree with the shooting, report it explicitly to the photographer.

It is possible to organize this event thanks to understanding and support from the enterprise *Lesy České republiky, s. p.* (the keeper of forests in ownership of the Czech Republic) and municipalities of Staré Město pod Landštejnem and Slavonice

Thank You!

**LESYČR**



We also thank to Mr. Karel Batelka,  
and the Biathlon club Staré Město pod Landštejnem

The event was financially supported by the South Bohemian Region (Jihočeský kraj)  
and municipality Jindřichův Hradec. Thank You!

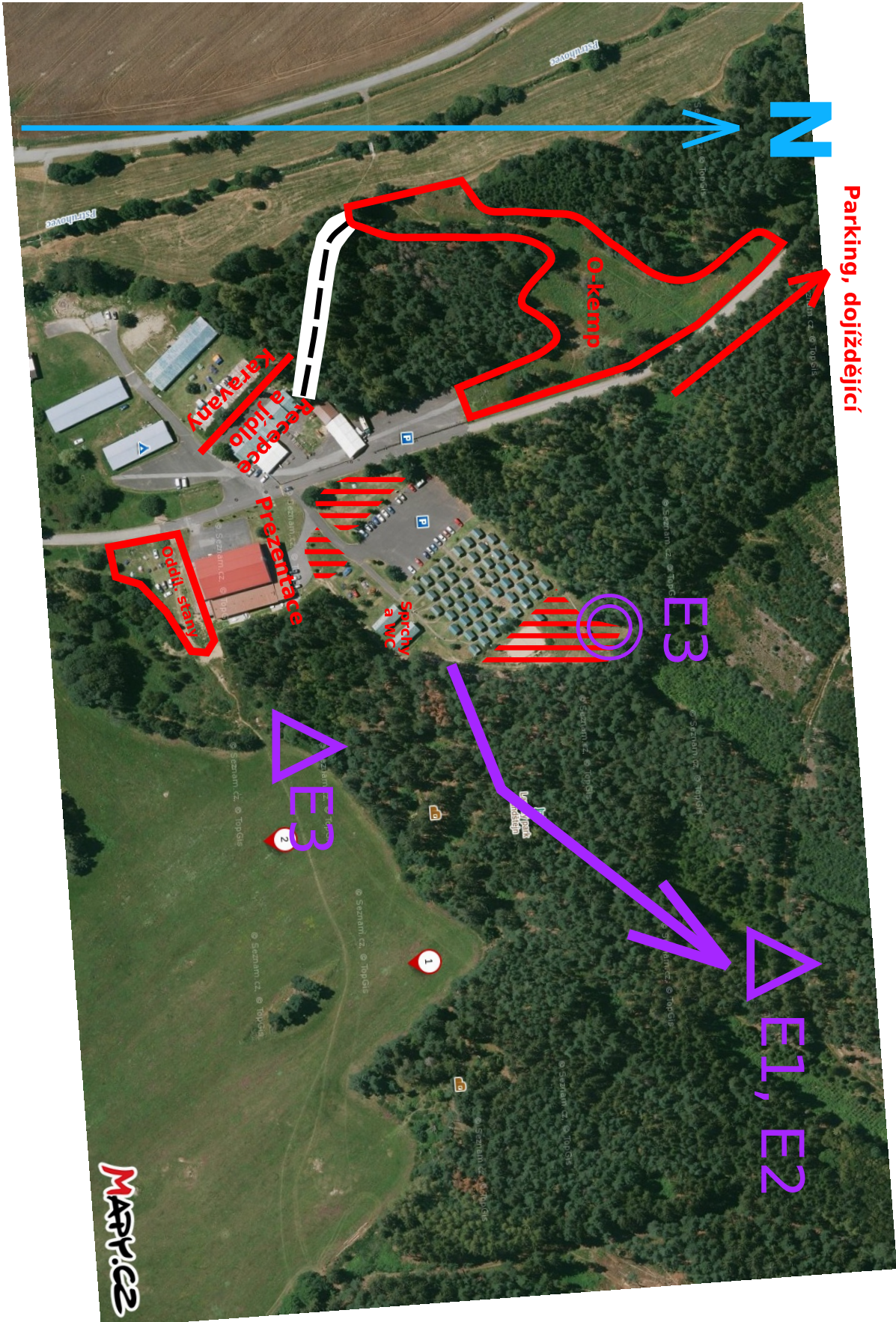


**Jihočeský kraj**



## Event centre, plan

It is not allowed to set tents in hashed areas.



## E1, longer middle, Friday 27 August

**Time 00:** 14:00

**Time limit:** 100 minutes

**Map** (DH12 – DH55A, T): [Pstruhovec IK47](#), 1:10 000, A4 size, landscape

**Map** (P, HDR, DH10(N), DH55B, DH65AB, DH75): [Podhájí IK47](#), 1:7 500, A4 size, portrait

**Control descriptions color:** light blue

<b>Distances:</b>	Event centre – Start	2 300 m (ascent 90 m)	blue-white ribbons
	Finish 1 – Event centre	2 800 m (ascent 30 m)	red ribbons to start
	Finish 2 – Event centre	1 400 m (ascent 0 m)	blue-white ribbons
	Finish 1 – Start	500 m (ascent 30 m)	red ribbons
	Finish 2 – Start	900 m (ascent 25 m)	blue-white ribbons

Finish 1 applies to classes with the *Pstruhovec* map (scale 1:10 000), finish 2 for classes with the *Podhájí* map (scale 1:7 500).

Finish 2 is located on the path to start. The way from finish 1 passes start.

**WC at start:** 2× mobile booths.

**Refreshment:** Water and syrup 900 m before start (at finish 2, if you take a cup with you, please, dispose it into plastic bags at start), water and syrup at finish. Classes running with the *Pstruhovec* map (1:10 000) have one more possibility of refreshment (water) on the track (the cup symbols on the map).

## E2, long, Saturday 28 August

**Time 00:** 10:00

**Time limit:** 150 minutes

**Map** (all classes): [Uhliště IK47](#), 1:10 000, A4 size, portrait

**Control descriptions color:** pink

**Crossing the road:** Classes H18, H21A, H21B, H21C, H35A, H45A, D21A, D21B, D35A, D55B, D65A cross twice the road *Staré Město – Stáلكov*. Traffic on the road is not heavy, nevertheless, not completely negligible (especially during the holiday period). **When crossing the road, be careful!**

<b>Distances:</b>	Event centre – Start	1 800 m (ascent 65 m)	blue-white ribbons
	Finish – Event centre	2 000 m (ascent 30 m)	red ribbons for the first 450 meters
	Finish – Start	700 m (ascent 20 m)	red ribbons for the first 450 meters

The path to start/from finish is common on the first/last 1 550 m.

**WC at start:** 2× mobile booths.

**Refreshment:** Water at start, water and syrup at finish. Classes DH12 – DH65A, T have refreshment (water) on control(s) (1 – 2×), the cup symbol in the control descriptions.



## E3, shortened long, Sunday 29 August

**Time 00:** 9:00, chasing start for competitors having their loss up to 45 minutes to the class leader. The remaining runners will start in regular intervals. The first runner of each class starts in times as follows.

Start time	CEST time	Classes D	Classes H
00	9:00	D21A, D35B	H16, H21B, H21C, H75
15	9:15	D18, D21B, D55B	H21A, H35B
30	9:30	D10, D55A	H10N, H14, H35A
45	9:45	D16, D35A	H12, H55A
60	10:00	D10N, D12, D45B, D65A, D75	H10
75	10:15	D65B	H45A, H45B, H65A, H65B
90	10:30	D14, D21C, D45A	H18, H55B

Start will proceed from two corridors: **D** (for women) and **H** (for men).

**Time limit:** 120 minutes

**Map** (DH12 – DH55A, T): [Mlýnský les IK47](#), 1:10 000, A4 size, portrait

**Map** (P, HDR, DH10(N), DH55B, DH65AB, DH75): [Kolčavka IK47](#), 1:7 500, A4 size, landscape

**Control descriptions color:** white

**Distances:** Event centre – Start 300 m (ascent 15 m) blue-white ribbons  
Finish – Event centre 0 m

**Start numbers:** The best five competitors of all classes (except HDR, P, T) are obliged to run with the start number placed on their chest. The numbers (including safety pins), will be available in the start area (before entering the start corridor).

**WC at start:** not available.

**Refreshment:** Water and syrup at finish. Water on tracks (the cup symbol on the map), realistically achievable (1 – 2×) for classes D14 – D65A, H14 – H65A, T.

## Course parameters

### E1, Friday 27 August, longer middle

Class	Length [m]	Ascent [m]	Controls	Class	Length [m]	Ascent [m]	Controls
D10N	2 100 / 3 900	50	8	H10N	2 100 / 3 900	50	8
D10N	2 100 / 3 900	50	8	H10N	2 100 / 3 900	50	8
D10	2 100	55	9	H10	2 100	55	10
D12	2 900	110	12	H12	3 000	110	13
D14	3 100	130	15	H14	3 400	130	16
D16	3 800	145	18	H16	4 500	165	21
D18	4 300	165	21	H18	5 400	240	24
D21A	6 200	245	25	H21A	6 900	250	29
D21B	5 200	200	22	H21B	6 100	245	24
D21C	3 800	135	15	H21C	4 600	205	20
D35A	5 100	225	22	H35A	6 100	245	23
D35B	3 600	150	17	H35B	4 500	185	20
D45A	4 300	160	20	H45A	4 800	165	22
D45B	3 000	115	14	H45B	3 800	135	18
D55A	3 300	135	15	H55A	3 900	135	18
D55B	2 300	50	11	H55B	2 600	50	12
D65A	2 300	55	12	H65A	2 800	70	13
D65B	1 900	50	9	H65B	2 000	50	9
D75	2 200	50	10	H75	2 200	50	11
P	2 300	50	10	T	5 300	235	23
HDR	2 100 / 3 900	50	8				

Controls in the forest: 99

**E2, Saturday 28 August, long**

<b>Class</b>	<b>Length [m]</b>	<b>Ascent [m]</b>	<b>Controls</b>	<b>Class</b>	<b>Length [m]</b>	<b>Ascent [m]</b>	<b>Controls</b>
D10N	2 200	70	6	H10N	2 200	70	6
	/ 3 300				/ 3 300		
D10	2 100	70	6	H10	2 200	70	6
D12	2 900	85	9	H12	3 100	90	9
D14	4 100	110	8	H14	4 400	120	10
D16	4 800	130	10	H16	6 700	180	13
D18	5 700	175	11	H18	8 000	210	18
D21A	8 900	245	17	H21A	11 500	320	24
D21B	6 400	170	13	H21B	8 800	255	17
D21C	4 800	125	10	H21C	6 600	160	12
D35A	6 400	160	12	H35A	9 500	280	17
D35B	5 000	125	10	H35B	7 200	205	13
D45A	5 300	145	14	H45A	8 000	235	14
D45B	4 600	125	10	H45B	6 300	215	12
D55A	4 600	125	10	H55A	6 200	215	13
D55B	3 800	100	10	H55B	4 300	145	11
D65A	3 900	100	10	H65A	4 800	145	11
D65B	2 700	70	8	H65B	3 100	80	8
D75	2 700	70	8	H75	3 100	80	8
P	2 400	65	7	T	5 400	155	12
HDR	2 200	70	6				
	/ 3 300						

Controls in the forest: 72

**E3, Sunday 29 August, shortened long**

<b>Class</b>	<b>Length [m]</b>	<b>Ascent [m]</b>	<b>Controls</b>	<b>Class</b>	<b>Length [m]</b>	<b>Ascent [m]</b>	<b>Controls</b>
D10N	2 200	55	6	H10N	2 200	55	6
	/ 4 000				/ 4 000		
D10	2 000	65	7	H10	2 000	65	7
D12	2 400	60	10	H12	2 600	60	11
D14	4 000	115	12	H14	4 400	140	13
D16	4 500	115	14	H16	5 600	185	16
D18	5 500	150	16	H18	6 700	195	16
D21A	7 300	245	19	H21A	9 200	285	21
D21B	6 200	195	17	H21B	7 300	245	18
D21C	5 200	155	13	H21C	6 000	225	14
D35A	5 900	170	15	H35A	7 200	195	18
D35B	5 000	155	13	H35B	6 300	145	17
D45A	4 600	150	15	H45A	6 200	190	16
D45B	3 800	135	13	H45B	5 500	150	14
D55A	4 200	85	12	H55A	5 500	160	16
D55B	3 400	100	10	H55B	4 800	95	13
D65A	3 300	80	9	H65A	4 500	115	13
D65B	2 600	50	8	H65B	3 200	70	10
D75	2 500	65	10	H75	3 900	105	12
P	3 100	90	11	T	6 600	175	17
HDR	2 200	55	6				
	/ 4 000						

Controls in the forest: 81



## Traffic difficulties

When arriving in *Staré Město pod Landštejnem*, you will likely encounter some of traffic difficulties in the *Jindřichův Hradec* district. As of 16 August, the only way without complications is from Austria through *Slavonice*.

### **Road I/34 from Humpolec and Pelhřimov (arrival from the D1 “highway” to Jindřichův Hradec):**

There is a reconstruction on the way between *Kamenice nad Lipou* and *Jarošov nad Nežárkou*. The traffic is usually relatively smooth, nevertheless, delays up to 60 minutes have already been reported in past...

**Road II/128 between Jindřichův Hradec and Nová Bystřice for the first time:** The road is completely closed before *Číměř* in the area before the crossing with road II/149 (from *Lásenice*). The closure can, however, be avoided with only a small delay if you turn to *Bílá* and then go to *Číměř*, see also the red line on <https://mapy.cz/s/mohufarefu>.

**Road II/128 between Jindřichův Hradec and Nová Bystřice for the second time:** There is a bridge reconstruction before turns to *Potočná* and *Hradiště*. The traffic is driven by the traffic lights (only one direction goes within each interval). Delays are usually not long.

**Roads II/151 and II/164 in Kunžak:** *Kunžak* is officially completely impassable from all directions (*Strmilov*, *Dačice*, *N. Bystřice* and *J. Hradec*). Nevertheless, there exists a way on how to pass it from both *Strmilov* and *Dačice* direction *Nová Bystřice* (by a “standard” car). Follow the red line on <https://mapy.cz/s/jolofanupu>. The deviation (prepared for locals) leads for about 100 m on the pedestrian trail which is now officially invalidated (cars are allowed). We do not recommend it for caravans (wider and/or longer cars).